



Sprout Accessories Pty Ltd

W: www.sproutinc.com.au

E: sproutenquiries@sproutinc.com.au



INSTRUCTION MANUAL

Magnetic 2-in-1 Wireless Charging Stand



The logo for the brand 'sprout' is displayed in a white, lowercase, sans-serif font. The letter 't' is stylized with a small green sprout growing from its top right, featuring two leaves and a thin stem. The background is a solid, vibrant yellow.

Sprout is an Australian brand that develops technology accessories to enhance your world, now and into the future. From maximising your productivity at work and while you study to enriching your downtime and recreational activities, we develop accessories that add value to your way of life.

CONTENT

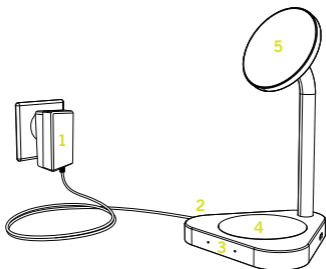
01. PRODUCT OVERVIEW	04
02. WHAT'S IN THE BOX?	05
03. QUICK START GUIDE	06
04. SPECIFICATIONS	08
05. IMPORTANT SAFETY INFO	09
08. CONSUMER GUARANTEE	10



Scan the QR code
to access an online
version of this manual

01. Product Overview

1. Power adaptor
2. Power adaptor input
3. LED charging indicator
4. Wireless charging output
5. Magnetic wireless charging output



02.

What's in the Box?

Thank you for choosing Sprout's *Magnetic 2-in-1 Wireless Charging Stand*.

For optimum performance and safety, please read instructions carefully before usage.

Please keep this manual for future reference.

1x Magnetic 2-in-1 Wireless Charging Stand

1x 30W power adaptor

1x Product manual

03.

Quick Start Guide

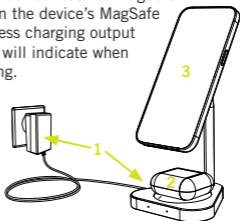
Using your Magnetic 2-in-1 Wireless Charging Stand:

The Sprout Magnetic 2-in-1 Wireless Charging Stand must be used with the 30W Power Adaptor supplied in the box. Do not use an alternate power source.

The wireless charging output will charge all devices compatible with Qi wireless charging. Note that to secure your device using the magnetic wireless charging output, your device must feature MagSafe Technology.

To use your wireless charger:

1. Connect the 30W power adaptor to the 'power adaptor input' and plug into a power point.
2. To use the wireless charging output, place your device down on the charging pad. Align the device to the centre of the wireless charging pad for best charge. Alignment may vary by device.
3. To use the magnetic wireless charging output, first ensure your device features MagSafe technology. Align the device's MagSafe ring to the wireless charging output and your device will indicate when it begins charging.



Note:

- If charging while phone is in a case, the charging speed may be impacted. This may even result in intermittent or discontinued charging.
- Cases with a thickness of more than 5mm should be removed prior to charging.
- Cases containing any metal or magnets that are not compatible with MagSafe should be removed.
- When used together, the wireless charging output is 20W total.

The Indicator Light:

- Red and green lights will flash alternately when charging pad is first connected to power
- The red light will stay illuminated when the charging pad begins to charge your device
- For Android, the light will turn green when the device is fully charged, and charging will stop
- For Apple, the light will remain red and continue even when your device is fully charged
- The red and green light will flash continuously and stop charging if a foreign body is on the charging pad

04.

Specifications

- Unit Size: 93.83 x 86.4 x 147.77 mm (L x W x H)
- Unit Weight: 178g
- Input: 15V=2A
- Magnetic Wireless Output: 7.5W/15W
- Wireless Output: 5W/10W
- Total Output: 20W (Max)
- Operating Temperature: 0-40°C

05.

Important Safety Info

Read all instructions and warnings prior to using this product. Improper use of this product may result in product damage, excess heat, toxic fumes, fire or explosion.

- Do not use the Magnetic 2-in-1 Wireless Charging Stand near an open fire, heat source or excessive heat.
- Do not attempt to power this device using any method, apparatus, or connection other than the device's power adaptor. For questions or instructions on how to power the device refer to the illustrations in this user manual.
- Do not disassemble this device or attempt to modify it in any manner.
- Do not put metal objects or magnets that are not MagSafe compatible between the mobile device and the wireless charging surface.
- All products have gone through a thorough quality assurance inspections. If you find that your device is excessively hot, is emitting odor, is deformed, abraded, cut or is experiencing or demonstrating an abnormal phenomenon, immediately stop all product use and contact Sprout.



06.

Consumer Guarantee

Our goods come with guarantees that cannot be excluded under the Australian Consumer Law. You are entitled to a replacement or refund for a major failure and compensation for any other reasonably foreseeable loss or damage. You are also entitled to have the goods repaired or replaced if the goods fail to be of acceptable quality and the failure does not amount to a major failure. If you have any questions about your rights in relation to this product, please return it to point of sale or contact us at www.sproutinc.com.au. This warranty does not affect your legal statutory rights under the Australian Consumer Law. For more information about your rights under Australia Consumer Law go to www.accc.gov.au.

Your Magnetic 2-in-1 Wireless Charging Stand is warranted to the original owner for 24 months from the date of purchase against defects in material and workmanship under normal use and service. The warranty does not cover misuse of this product and liability will not exceed the purchase price of the product.

If you have any problems while using the product, please do not hesitate to contact our customer support team.

06.

Consumer Guarantee

For warranty and technical support please visit www.sproutinc.com.au or contact us:

275 George Street, Brisbane, 4000
E sproutenquiries@sproutinc.com.au

Thank you for choosing a Sprout product.